



AIRPORT
PLANNING DESIGN & CONSTRUCTION
SYMPOSIUM

FEBRUARY 23 - 25, 2011
SHERATON DOWNTOWN DENVER HOTEL
DENVER, COLORADO



PLANNING DESIGN & CONSTRUCTION

WORKSHOP NUMBER:

Gray Skies to Green:

WORKSHOP TITLE: How Climate is Affecting the Aviation Industry

PRESENTER: John Putnam
Kaplan Kirsch & Rockwell LLP

DATE: February 23, 2011



Where Are We?

- No federal CC legislation
- Beginning of EPA regulation
 - Uncertain Congressional fate
 - Litigation
- Early in NEPA review
- Early in State review/regulation
- Municipal policies maturing

Why Airports Consider Carbon



- Future federal regulation
- Future/current state regulation
- Environmental leadership
- Municipal policy
- Business opportunity
- Reason affects approach

GHG Inventory -- Boundaries

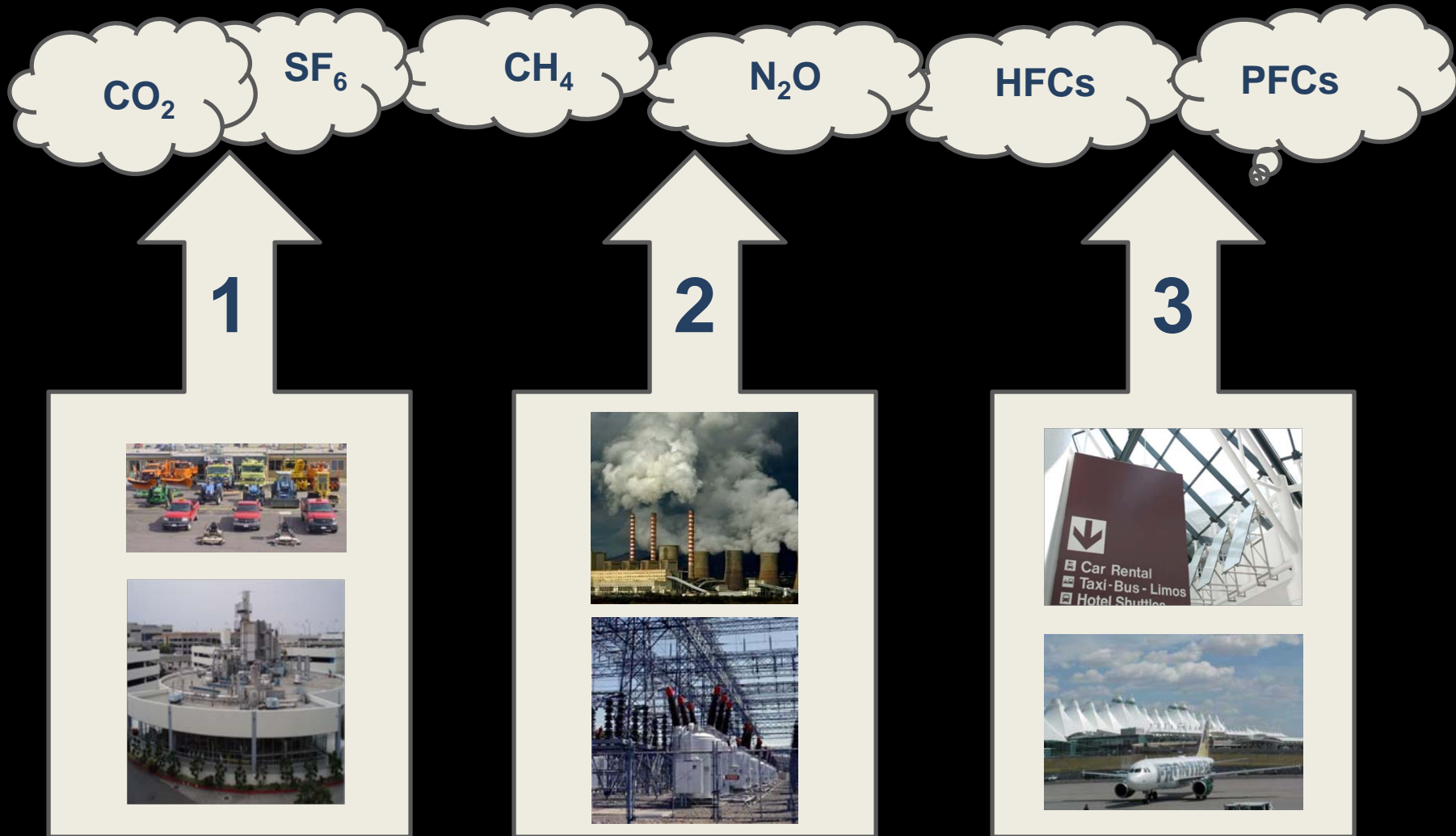


□ Under Development

□ Topics

- **Double-counting**
- **Ownership**
- **Mitigation**
- **Treatment in future legislation or regulation**

GHG Inventories – “Scope” and Control



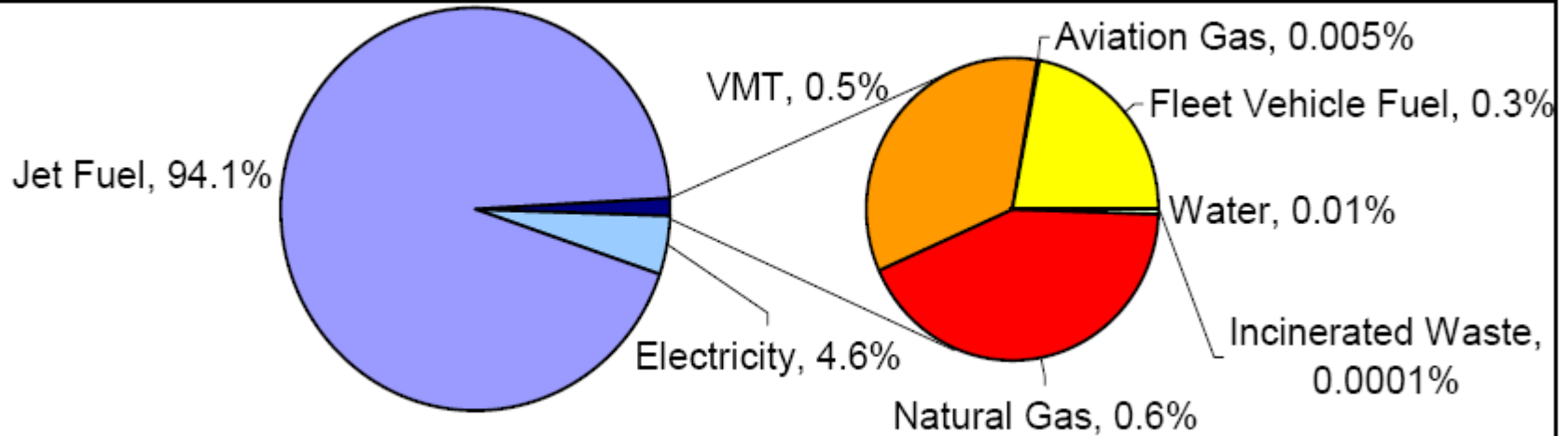
Scope 1:
Owned/Operated

Scope 2:
Purchased

Scope 3:
Tenants, Public

Example -- DIA

Total DIA GHG Emissions = 4.8 million mtCO₂e.
Approximately 1.2 million mtCO₂e is allocated to Denver.



Voluntary Emissions Reductions

United States
Environmental Protection
Agency

Office of Air and Radiation

September 2004

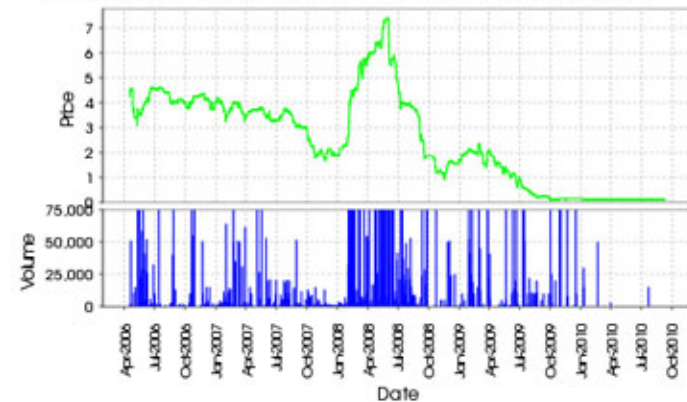


GUIDANCE ON AIRPORT EMISSION REDUCTION CREDITS FOR EARLY MEASURES THROUGH VOLUNTARY AIRPORT LOW EMISSION PROGRAMS



Start Date: Apr 17, 2006
End Date: Sep 10, 2010
Vintage: 2010
Chart Type: Line
Submit

CCX Carbon Financial Instrument (CFI) Contracts Daily Report



Price and volume reported in metric tons CO₂

Can airports capitalize
on carbon credits?
Who owns?

Gate Electrification / PCA/GSE



- Airport infrastructure
- Airline GSE (usually)
- Who owns credits?
 - Carbon Credits versus VALE AERCs
 - Double counting? Triple counting?
 - Treatment of liquid fuels in cap and trade systems

Solar /Wind/Efficiency Projects at Airports



Power Purchase Agreement or Direct Ownership?

Financing

Ownership

Maintenance

Tax Credits

RECs/Carbon Credits

Questions?

- John Putnam
- Kaplan Kirsch & Rockwell, LLP
- jputnam@kaplankirsch.com
- (303)825-7000